



two experts in comfort unite to create
the world's most comfortable office chair.



exclusively by
raynor group companies
sit smarter.

Featuring



Tempur-Pedic® 200/250

Not only are you in control, but in style, too. TEMPUR® material works in complement with Raynor's innovative spring technology to give you a chair that responds to your body's every move. Also equipped with Outlast® cooling technology to regulate your skin temperature and reduce uncomfortable perspiration.

features

- authentic TEMPUR® material
- Outlast® cooling technology
- spring technology built into seat
- lumbar adjustment
- ratchet back height adjustment
- weight activated mechanism
- one-touch pneumatic seat height adjustment
- seat slide actuation
- tilt lock

available colors



1801
eclipse



1802
night sea



1803
nectarine



1804
meadow



1805
dark java



1806
bullseye

Fabric color options are for **SEAT ONLY**. Color of fabric/mesh on backrest is black.



TP200
mesh-back
~~\$990~~
\$920



TP250
fabric-back
~~\$990~~
\$920

Tempur-Pedic® 300/350

The TEMPUR® material contours to the unique shape of your body, assuring you comfort and support throughout the day. It's a chair that works with you, instead of against you. A luxurious leather finish creates a contemporary, sleek look that dresses up any office or conference room.

features
authentic
TEMPUR® material
knee-tilt mechanism
soft-touch leather
waterfall seat



TP300 leather
high-back
\$886



TP350 leather
mid-back
\$860



feel the difference

Millions of satisfied owners get their best night's sleep on a Tempur-Pedic® mattress. And now, that technology is available in an office chair, exclusively from Raynor Group. The one-of-a-kind TEMPUR® material delivers personalized comfort and support and is an outstanding complement to Raynor's world class ergonomics and design.

no more pressure

TEMPUR® material conforms to your individual body contours, thus reducing uncomfortable, nagging pressure points.

you have our full support

TEMPUR® material molds to your body and evenly distributes your weight over the surface of the chair. The result is extraordinary back and leg support, as well as customized comfort that keeps you refreshed all day.

positively responsive

Chairs with TEMPUR® material totally get you. As you sit, the cushion adjusts to your unique body contours for a customized sitting experience. When you get up, the chair returns to its original shape.

raynor group companies™
sit smarter.™

www.raynorgroup.com



by **raynor group** companies

Tempur-Pedic® TP210/220 Extended Height Stool

Work in comfort and style with the TP210/220 Extended Height Stool. Made with authentic TEMPUR® material — the same material found in Tempur-Pedic® mattresses — these stools conform to your body's unique shape to provide contoured comfort and support all day. It's a chair that works in any office environment.

Available Colors*



BULLSEYE



DARK JAVA



MEADOW



ECLIPSE



NECTARINE



NIGHT SEA



TP220EHS
black fabric back
fabric seat

~~\$900~~
\$920



TP210EHS
black mesh back
fabric seat

~~\$900~~
\$920

FEATURING



features

Authentic TEMPUR® material

Built-in adjustable
lumbar support curve

One touch pneumatic
height adjustment

Soft pad armrests
adjustable for height

Ratchet back
height adjustment

Footring height
adjustment

Outlast® Technology

*Color options are for fabric seat only.



feel the difference

Millions of satisfied owners get their best night's sleep on a Tempur-Pedic® mattress. And now, that technology is available in an office chair, exclusively from Raynor Group. The one-of-a-kind TEMPUR® material delivers personalized comfort and support and is an outstanding complement to Raynor's world class ergonomics and design.

no more pressure

TEMPUR® material conforms to your individual body contours, thus reducing uncomfortable, nagging pressure points.

you have our full support

TEMPUR® material molds to your body and evenly distributes your weight over the surface of the chair. The result is extraordinary back and leg support, as well as customized comfort that keeps you refreshed all day.

positively responsive

Chairs with TEMPUR® material totally get you. As you sit, the cushion adjusts to your unique body contours for a customized sitting experience. When you get up, the chair returns to its original shape.

raynor group companies™
sit smarter.™

www.raynorgroup.com



Tempur-Pedic® 600 Mesh Back Multifunction Chair

Work in comfort and style with the TP600 Mesh Back Multifunction Chair. Made with authentic TEMPUR® material — the same material found in Tempur-Pedic® mattresses — the TP600 conforms to your body's unique shape to provide contoured comfort and support day after day. It's a chair that works with you, instead of against you.

Available Colors*



Yachting Blue
Item TP600-BLUE



Rosso Red
Item TP600-RED



Denim
Item TP600-DENIM



Cobalt
Item TP600-COBALT



Sublime Green
Item TP600-GREEN



Agate Grey
Item TP600-AGATE

- features
- authentic TEMPUR® material
- "Infinite" synchro mechanism with tilt lock feature
- Mesh back with built-in lumbar support curve
- One touch pneumatic height adjustment
- Soft pad armrests adjustable for height and width
- Designer aluminum base in black finish with dual wheel casters
- Ratchet back height adjustment
- Seat slider depth adjustment
- Tilt tension control



TP600
mesh-back fabric seat
Black
Item TP600-BLK
\$875

* Color options are for fabric seat only.
Mesh back remains Slate Grey.



feel the difference

Millions of satisfied owners get their best night's sleep on a Tempur-Pedic® mattress. And now, that technology is available in an office chair, exclusively from Raynor Group. The one-of-a-kind TEMPUR® material delivers personalized comfort and support and is an outstanding complement to Raynor's world class ergonomics and design.

no more pressure

TEMPUR® material conforms to your individual body contours, thus reducing uncomfortable, nagging pressure points.

you have our full support

TEMPUR® material molds to your body and evenly distributes your weight over the surface of the chair. The result is extraordinary back and leg support, as well as customized comfort that keeps you refreshed all day.

positively responsive

Chairs with TEMPUR® material totally get you. As you sit, the cushion adjusts to your unique body contours for a customized sitting experience. When you get up, the chair returns to its original shape.

raynor group companies™
sit smarter.™

www.raynorgroup.com

Tempur-Pedic® 200/250 | 300/350



Fabric & Leather Colors



TP200
mesh back

TP250
fabric back

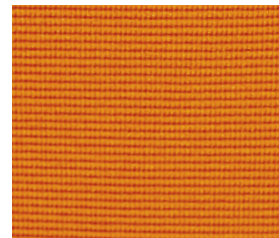
Seat Fabric Color Options



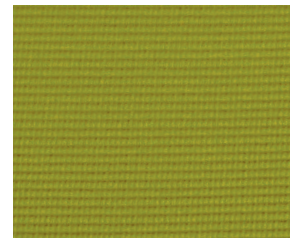
1801 eclipse



1802 night sea



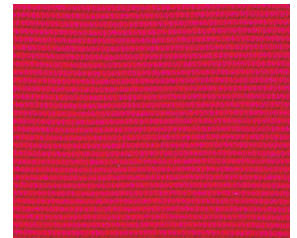
1803 nectarine



1804 meadow



1805 dark java

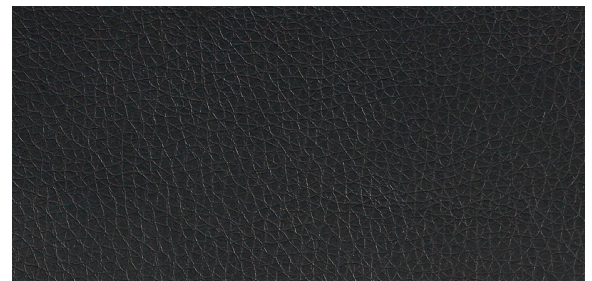


1806 bullseye



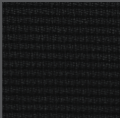

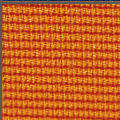

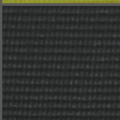



TP300
Leather
high-back

TP350
Leather
mid-back



raynor group companies™
sit smarter.™

Fabric & Leather Specifications

Code/Color	Content	Weight/ Linear Yard	Surface Abrasion
 1801 Eclipse	100% Polyester	12.3 oz	1.8% loss ASTM D3884; 30,000 cycles ASTM D4966-2012, Martindale tester
 1802 Night Sea	100% Polyester	12.3 oz	1.8% loss ASTM D3884; 30,000 cycles ASTM D4966-2012, Martindale tester
 1803 Nectarine	100% Polyester	12.3 oz	1.8% loss ASTM D3884; 30,000 cycles ASTM D4966-2012, Martindale tester
 1804 Meadow	100% Polyester	12.3 oz	1.8% loss ASTM D3884; 30,000 cycles ASTM D4966-2012, Martindale tester
 1805 Dark Java	100% Polyester	12.3 oz	1.8% loss ASTM D3884; 30,000 cycles ASTM D4966-2012, Martindale tester
 1806 Bullseye	100% Polyester	12.3 oz	1.8% loss ASTM D3884; 30,000 cycles ASTM D4966-2012, Martindale tester
 YM91 Black Mesh	50% Elastomer & 50% Polyester	15.4 oz	0.18% loss ASTM D3884; 30,000 cycles ASTM D4966-2012, Martindale tester
 DE90PU Black Leather	Bonded	19.9 oz	0.02% loss ASTM D3884; 30,000 cycles ASTM D4966-2012, Martindale tester

FLAMMABILITY

Fabrics Meet
CAL117-2013 Section 1.

Colors may vary slightly between dye lots.

All information subject to change without prior notice.

ABRASION TESTS

ASTM D4966 / Martindale = Rubs (cycles)
ASTM D3884 requirement is less than
10% weight loss

Tempur-Pedic® 600 Mesh Back Multifunction Chair



Seat Fabric Color Options



TP600-AGATE



TP600-COBALT



TP600-DENIM



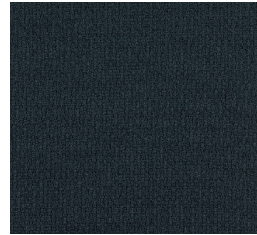
TP600-RED



TP600-GREEN



TP600-BLUE



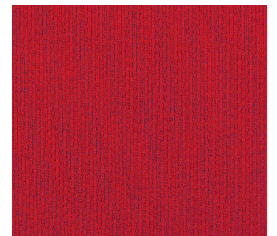
9701 agate grey



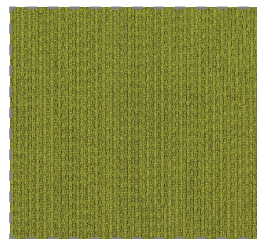
9714 cobalt



9724 denim



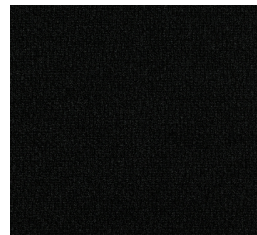
9776 rosso red



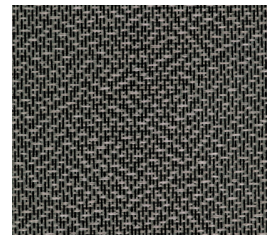
9707 sublime green



9778 yachting blue



9706 black



PM37 slate mesh






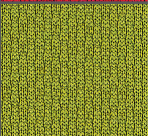

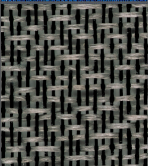


TP600-Black
slate mesh-back
fabric seat

Tempur-Pedic® 600 Mesh Back Multifunction Chair



Fabric Specifications

Code/Color	Content	Weight/ Linear Yard	Surface Abrasion
 Agate Grey	100% Polyester	15.9 oz	Burst Strength ASTM D3786-2009 over 150/in ² 40,000 cycles ASTM D4966-2012 Martindale Tester
 Black	100% Polyester	15.9 oz	Burst Strength ASTM D3786-2009 over 150/in ² 40,000 cycles ASTM D4966-2012 Martindale Tester
 Cobalt	100% Polyester	15.9 oz	Burst Strength ASTM D3786-2009 over 150/in ² 40,000 cycles ASTM D4966-2012 Martindale Tester
 Denim	100% Polyester	15.9 oz	Burst Strength ASTM D3786-2009 over 150/in ² 40,000 cycles ASTM D4966-2012 Martindale Tester
 Rosso Red	100% Polyester	15.9 oz	Burst Strength ASTM D3786-2009 over 150/in ² 40,000 cycles ASTM D4966-2012 Martindale Tester
 Sublime Green	100% Polyester	15.9 oz	Burst Strength ASTM D3786-2009 over 150/in ² 40,000 cycles ASTM D4966-2012 Martindale Tester
 Yachting Blue	100% Polyester	15.9 oz	Burst Strength ASTM D3786-2009 over 150/in ² 40,000 cycles ASTM D4966-2012 Martindale Tester
 Slate Mesh	50% PE 50% Thermoplastic Elastomer Polyester	13.78 oz	Breaking Strength ASTM D5034 Warp: 188.4 lbf Filling: 222.1 lbf 70,000 cycles ASTM D4157 Wyzenbeck Abrasion

FLAMMABILITY

Fabrics Meet
CAL117-2013 Section 1.

Colors may vary slightly between dye lots.

All information subject to change without prior notice.

ABRASION TESTS

ASTM D4157 / Wyzenbeck = Rubs (cycles)
ASTM D4966 / Martindale = Rubs (cycles)

exclusively by

raynor group companies™

sit smarter.™

www.raynorgroup.com